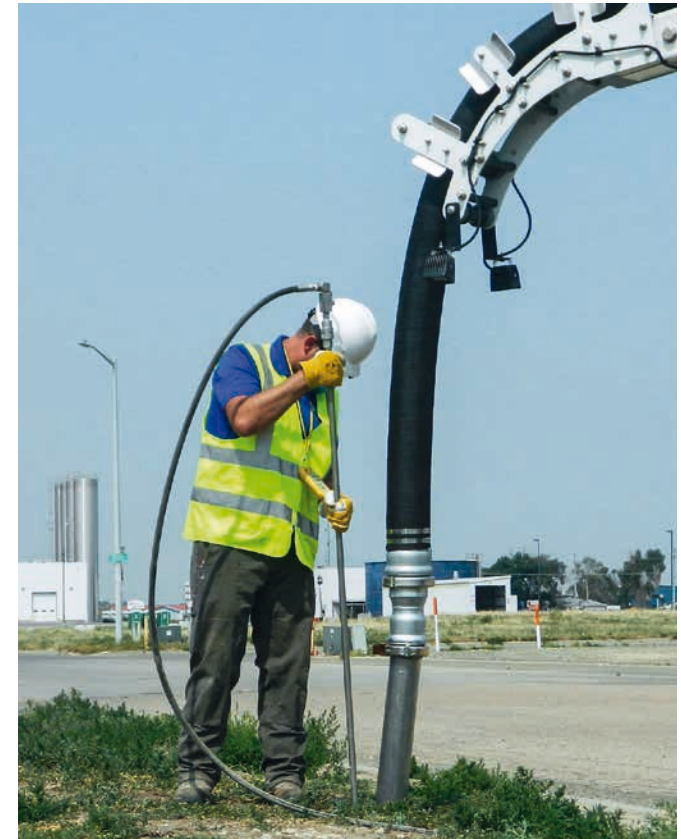


Kaiser. Performance counts.



# Urban X<sup>®</sup>

The ultimate multi-tool for vacuum excavation.

HYDRO & AIR  
EXCAVATION EQUIPMENT

# DETAILS AT A GLANCE

Pressure vessel design for pressure offloading of debris tank and vacuum filling of water tank



20' Extendable top gun boom with inline isolation valve

Optional cold weather and winterization packages

Robuschi DV105 positive displacement blower



Lift & dump offloading with full opening rear door & splash shield

Wireless remote and onboard control panel for ease of operation

Vacuum recovery of cyclone into debris tank



Dig ready boom configuration



# TECHNICAL SPECIFICATIONS

# Urban X<sup>®</sup>

## Dimensions 3-Axle Truck

Debris / Fresh water	8 yd / 800 gal
Tare weight*	33,000 lb
Dimensions L x W x H**	30'9" x 8' x 11'10"

\* Approximate weight subject to change with option content and chassis  
 \*\* Varies based on chassis manufacturer

## Tank superstructure

- Full opening rear door, lift and dump offloading
- Pressure offload capable
- Ability of vacuum fill fresh water tank
- Vacuum recovery of cyclone into debris tank
- Multiple storage racks and tool boxes
- Signage boards

## High pressure system

- High pressure water pump 10 gpm and 3,000 psi
- Retractable hose reel with 75' of 1/2" hose
- Variable speed hydraulic drive
- Flush out nozzles in tank and cyclone

## Vacuum system

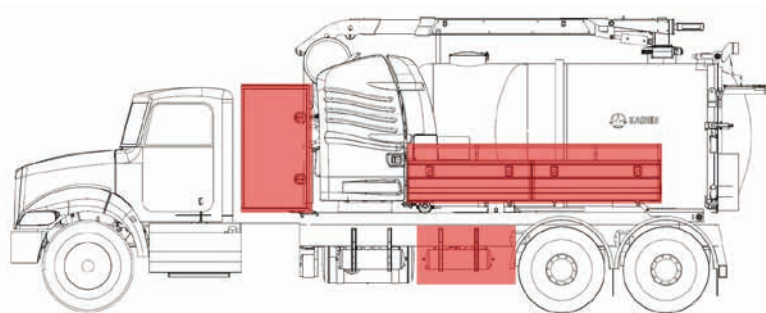
- Robuschi RBDV 105 positive displacement blower rated at 2,400 cfm and 28" Hg max vacuum
- 6 way, extra heavy duty, hydraulic powered boom
- Extendable boom with 5" or 6" OD hose option
- Dig-ready boom park position
- 10 micron final filter
- Vacuum breaker

## Wireless remote control

- Suction boom control
- Water pump speed / pressure control
- Dump door / lock control
- Vacuum on / off
- Engine speed control
- E-stop
- Work Lights

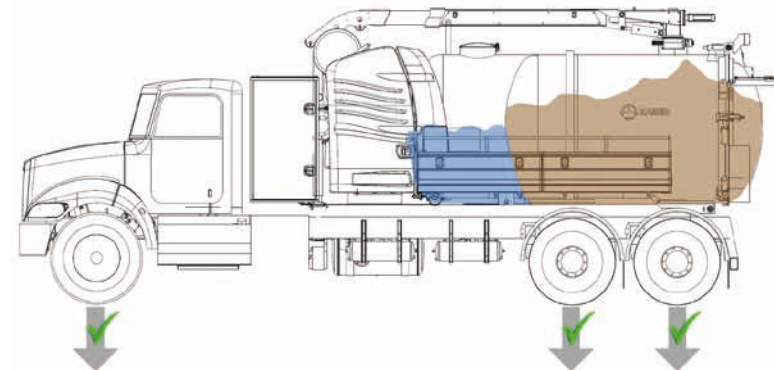
## Options

- 440,000 BTU boiler
- Air digging system, compressor rated at 200 psi / 200 cfm
- Winter package with additional heating system
- Scale system
- Custom options available



### Superior storage space

The Urban X offers storage space for tools and digging equipment in multiple locations.



### Street legal

Perfectly engineered weight distribution and tank capacities for optimal carrying capacity within bridge law guidelines.

## THE RIGHT KAISER PRODUCT FOR YOUR APPLICATION

### Sewer Cleaning Water Recycling



A perfect combination of performance and versatility and a benchmark in the high-performance recycling sector. KAISER PREMIER's equipment has the power you need for the toughest applications. Whether you are jetting through grease or roots in a sewer line, our vehicles can power through.

### Hydro Excavation



Setting new standards with superior performance in hydro excavation. With hydro excavation becoming a requirement over traditional excavation in most municipal, utility and infrastructure applications, KAISER PREMIER's hydrovac's are built to meet the most demanding applications.

### Mobile Walking Excavator



With independently articulating legs, our Mobile Walking Excavators can traverse job sites that are typically impassable with traditional excavators.



The international focus on modern environmental technologies has led to the growing importance of efficient, high-performance vehicles for sewer cleaning and industrial disposal. The KAISER Group is the leading player in the world market.

